

Severe Weather / Flash Flooding – MS

Current Situation: Severe weather and flash flooding prompted voluntary evacuations and local road closures are in effect across northern Mississippi. 150 homes have been impacted, and 60+ roadways are flooded, in Panola, Sunflower, and Bolivar Counties.

Food, Water, Shelter:

- Approximately 150+ homes damaged/affected (varying degrees) due to flooding; mostly in Bolivar County. (Region IV Spotrep as of 10:57 p.m.ET)
 - Sunflower County
 - 2 homes have been reported to have taken in water
 - Bolivar County
 - Rosedale has approximately 50 homes flooded
 - Mound Bayou has approximately 50 home flooded
 - Shelby has approximately 50 homes flooded
- The number of evacuees are unknown currently, Red Cross is assisting any displacements
- 2 shelters opened with an unknown number of occupants (Tallahatchie and Bolivar Counties)

Energy:

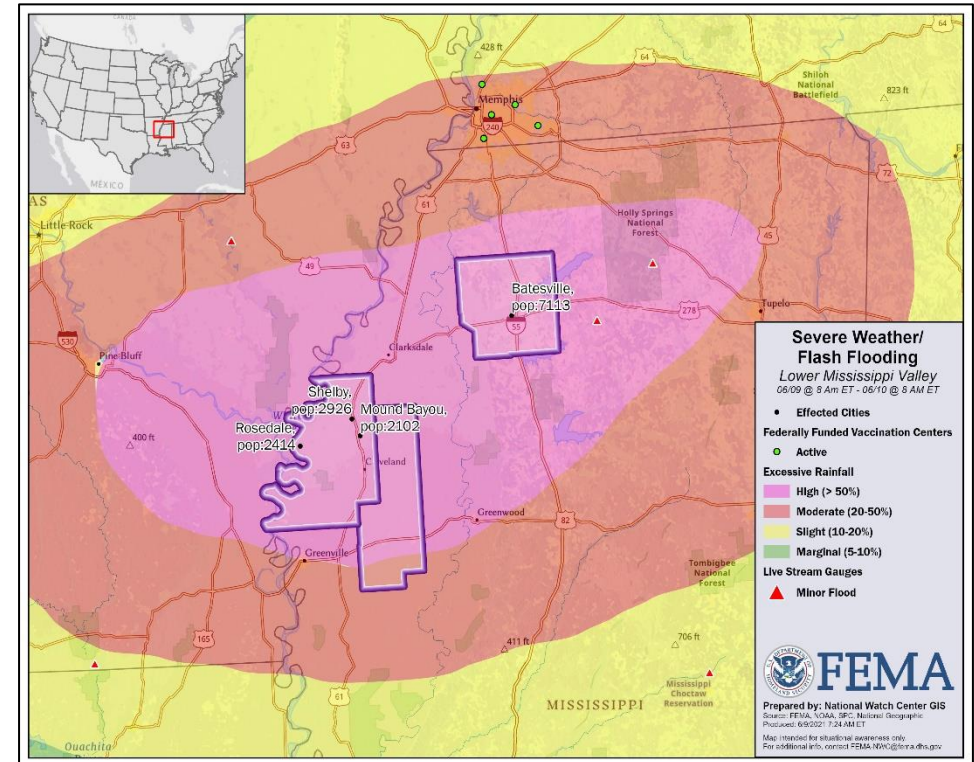
- Minimal power outages (less than 1%) in MS (DOE Eagle-I as of 4:00 a.m. ET)

State / Local Response:

- Level 2 (Partial Activation) due to COVID-19
- State assistance has been requested in the form of sandbags, Camelback water pumps, and American Red Cross assistance

FEMA / Federal Response :

- Region IV RWC remains at steady state and is monitoring; RRCC at Level III (COVID-19)
- Region IV IMAT-1 and IMAT-2 are Available
- No requests for FEMA assistance



FEMA