

REO Debris Removal & CYD Training

Photo requirements and placards for the REO Debris Removal Process:

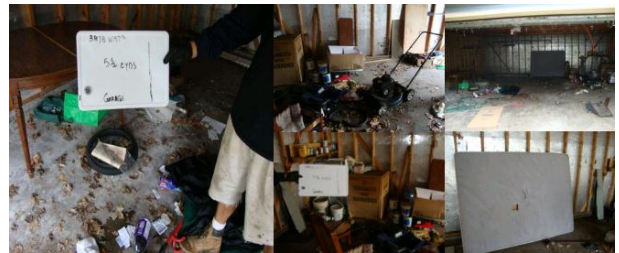
- Take photos of the debris in each room, labeling will help in the case of disputes
- Identify the container size (measure out the length, width, and depth make 100% sure you can see all ruler measurements)



- Before photo of empty truck/trailer with property in the background .
- Photo of container measurements (show tape for width, depth, and height).
- Progressive load photos showing ¼, ½, ¾, and completely loaded container (labeled on placard).
- Loads labeled, with yards matching the contents of the container.

Measure Debris Per Room in Interior and Exterior of

Property • Take photos of all 4 corners of each room • Take before photo to show the CYD count of each room



Exterior Debris Photos



Take Progressive Load Photos and Notate on • Empty with placard Placard. photo • $\frac{1}{4}$ full with placard photo • $\frac{1}{2}$ full with placard photo • $\frac{3}{4}$ full with placard photo • Full truck/trailer/container with placard photo • If more than 1 load repeat this process.

